

Annual Summary 2016 / 2017

With over four thousand concerts, screenings or exhibition days and nearly two thousand development sessions any summary is unable to celebrate all that has been delivered. Full detail is available in the 2016/17 Trustees' Report and Financial Statement available from our website or venues.

We are pleased to report that we have again made a small surplus which is worthy of mention in the context of Shetland Charitable Trust's reducing investment. Our thanks go to all Shetland Arts' staff who have worked hard to ensure the organisation's ongoing financial stability and to all our contributors and stakeholders.

We thank you all for your support and look forward to welcoming you in 2017/18.

G Howell

Graeme Howell
General Manager

Loraine Hall

Lorraine Hall
Chair



Income

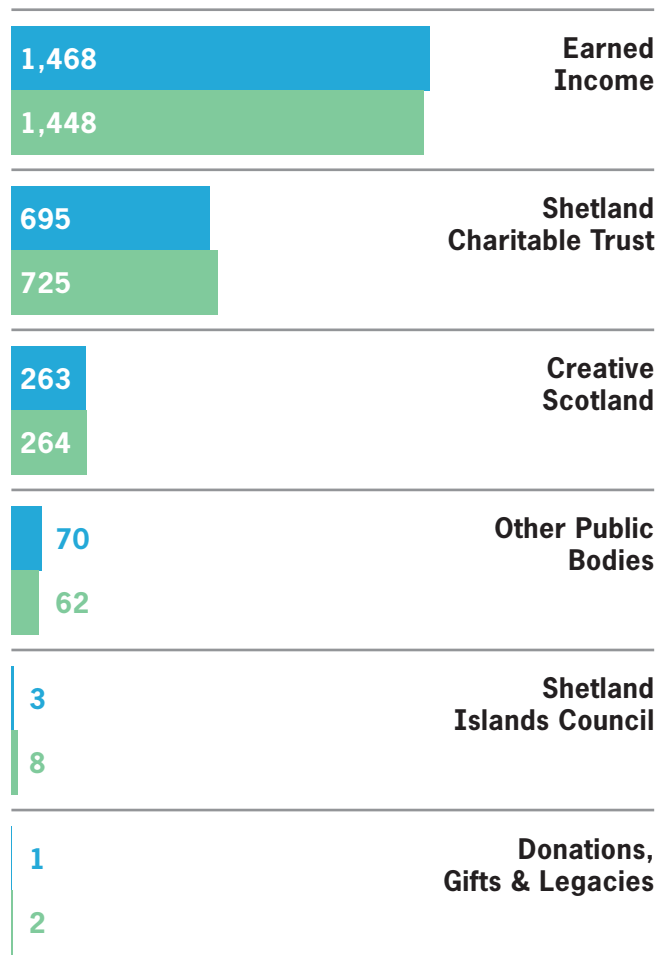
Total

£2,500k £2,509k

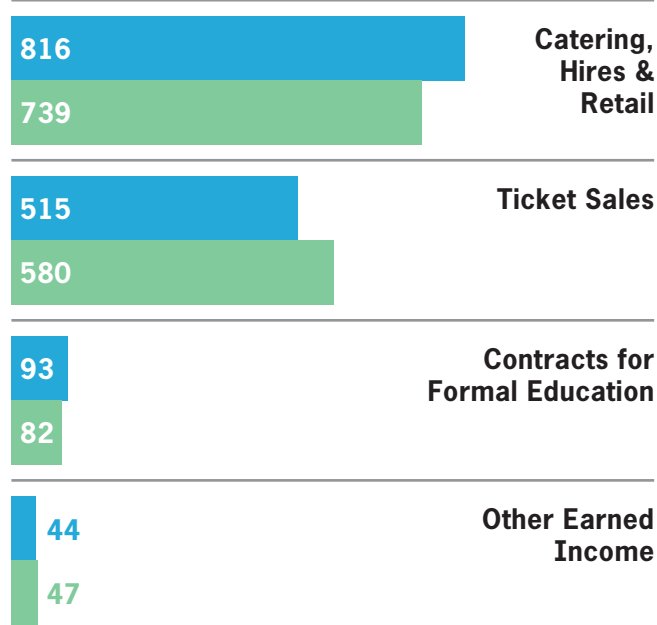
£(K)

This Year

Last Year



Earned Income Detail



Expenditure

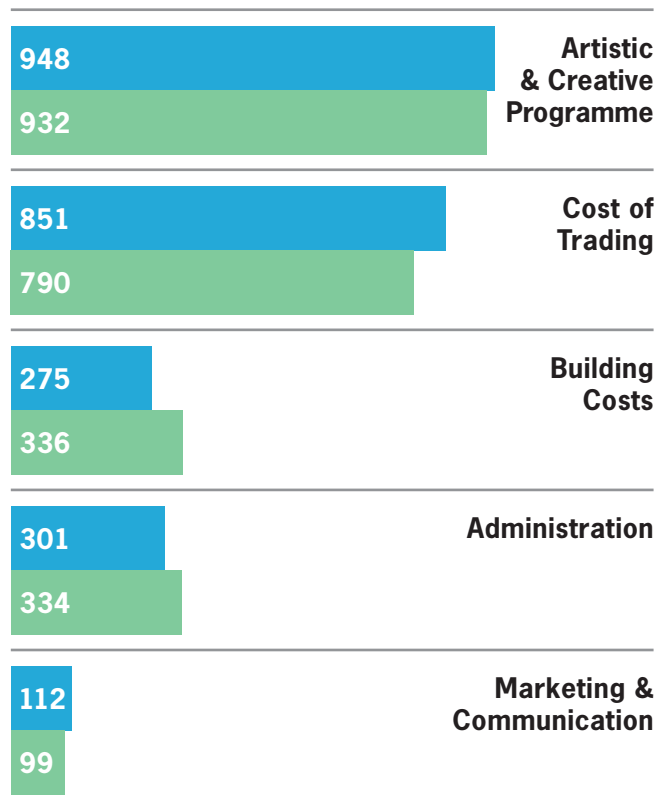
Total

£2,487k £2,491k

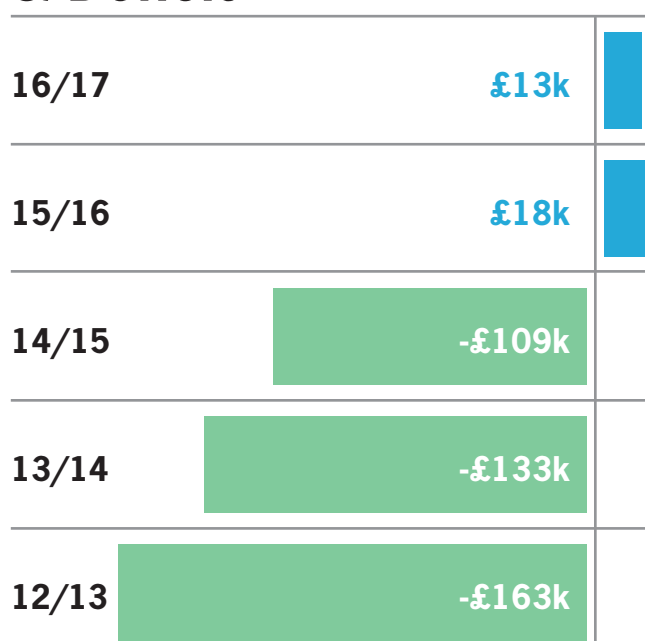
£(K)

This Year

Last Year



Operating Surplus & Deficit



Key Facts

	Concerts, Screenings, Exhibition Days	Audience Attendances	Development Sessions	Participations	Instances of Practitioners Supported	Instances of Groups Supported	Instances of Micro businesses Supported
Bonhoga	1,170	46,909	55	1,534	248	-	21
The Garrison	35	6,983	24	1,370	117	58	-
Mareel	3,529	145,279	1,489	12,392	1,372	59	32
Other Shetland	47	6,568	352	3,801	356	66	9
Online	-	-	4	12	-	-	-
National	-	-	-	3	3	-	-
International	3	119	5	108	50	8	-
Totals	4,784	205,858	1,929	19,220	2,146	191	62

1314



Volunteer Hours

3



Shetland Arts Festivals

30



Arts & Crafts Exhibitions

178



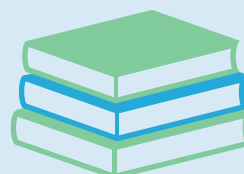
Recording Sessions

191



Concerts & Events

999



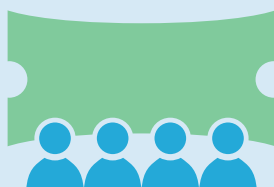
Formal Education Sessions

851



Informal Workshops & Development Sessions

2720

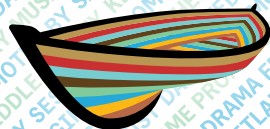


Cinema Screenings

79



Youth Development Sessions



Shetland *arts*

Partners / Supporters

Shetland Charitable Trust	Lerwick Port Authority	Citizens Advice Bureau	RIAS
Creative Scotland	LHD	Luminate	The Travelling Gallery
Highlands & Islands Enterprise	SIC Youth Services	Regional Screen Scotland	Virtuo Wealth
Shetland Islands Council	Arts & Business Scotland	Shetland Film Club	Film Hub Scotland
University of the Highlands & Islands	Shetland College	Amnesty International	Scottish Book Trust
Avid (Pro Tools)	Annsbrae	Unison Scotland	Heritage Lottery Fund
Children & The Arts	Supported Living & Outreach	Alzheimer Scotland	Postcode Community Trust
An Lanntair	Shetland Library	JG Rae	space2face
SIC Creative Links	Promote Shetland	Discovery Film Festival	
Shetland Catch	Global Yell	Screen Academy Scotland	
Shetland Fish Producers Organisation	Community Mediation Team	Scottish Documentary Institute	
	Mind Your Head	RSM UK	



ALBA | CHRUTHACHAIL

